

**POLEAS DENTADAS HTD PARA TAPER**

HTD taper bored timing belt pulleys

Poulies dentées HTD pour moyeu amovible

**5M-15**

mm

Paso

5

Pitch

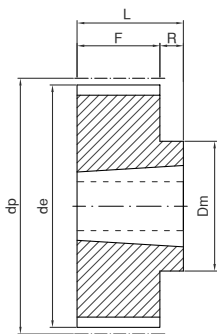
Pas

Para correas de ancho

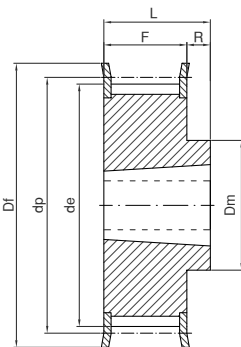
15

For belt width

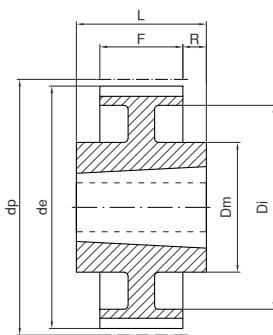
Pour courroies largeur



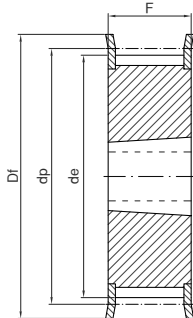
10



10F



13



15F

Ref.	Material	Z	Taper	Ø max.	dp	de	Df	Dm	Di	F	L	R	Fig.	Kg.
TL345M15	St	34	1008	25	54,11	52,97	57	22	22	22	15F	0,20		
TL365M15	St	36	1108	25	57,30	56,15	60	22	22	22	15F	0,25		
TL385M15	St	38	1108	25	60,48	59,34	66	22	22	22	15F	0,30		
TL405M15	St	40	1108	25	63,66	62,52	71	22	22	22	15F	0,35		
TL445M15	St	44	1108	25	70,03	68,89	75	22	22	22	15F	0,40		
TL485M15	St	48	1210	32	76,39	75,25	83	59	22	25	3	10F	0,46	
TL565M15	St	56	1210	32	89,13	87,99	93	70	22	25	3	10F	0,60	
TL645M15	St	64	1210	32	101,86	100,72	106	80	22	25	3	10F	0,80	
TL725M15	St	72	1610	42	114,59	113,45	92	22	25	3	10	1,20		
TL805M15	St	80	1610	42	127,32	126,18	92	22	25	3	10	1,76		
TL905M15	St	90	1610	42	143,24	142,10	92	22	25	3	10	2,32		
TL1125M15	St	112	2012	50	178,25	177,11	110		20	32	12	10		
TL1365M15	St	136	2012	50	216,45	215,31	110	199	20	32	6	13		

Material: Acero/Steel/Acier (St)

**POLEAS DENTADAS HTD PARA TAPER**

HTD taper bored timing belt pulleys

Poulies dentées HTD pour moyeu amovible

**8M-20**

mm

Paso

8

Pitch

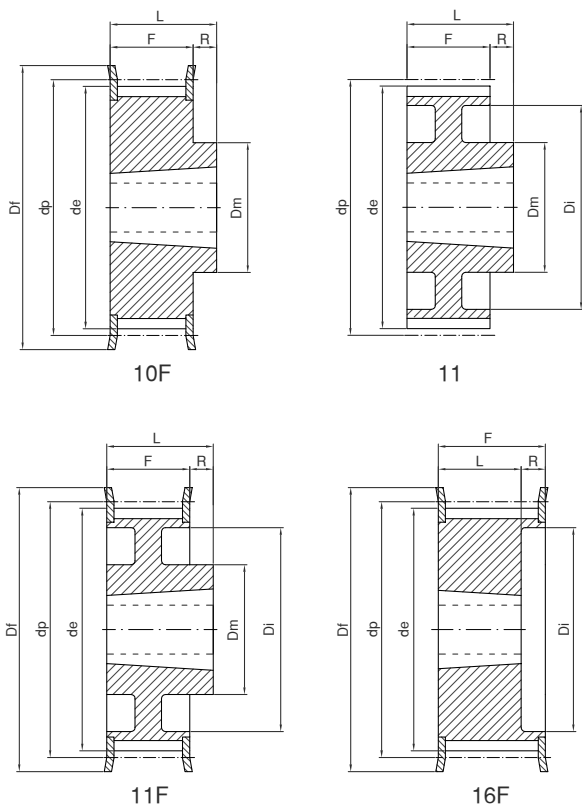
Pas

Para correas de ancho

20

For belt width

Pour courroies largeur



Ref.	Material	Z	Taper	Ø max.	dp	de	Df	Dm	Di	F	L	R	Fig.	Kg.
TL228M20	St	22	1008	25	56,02	54,65	60	37	28	22	6	16F	0,25	
TL248M20	St	24	1108	25	61,11	59,74	66	44	28	22	6	16F	0,30	
TL268M20	St	26	1108	25	66,21	64,84	71	45	28	22	6	16F	0,36	
TL288M20	St	28	1108	25	71,30	70,08	75	50	28	22	6	16F	0,45	
TL308M20	St	30	1108	25	76,39	75,13	83	58	28	22	6	16F	0,55	
TL328M20	St	32	1610	42	81,49	80,16	87	63	28	25	3	16F	0,43	
TL348M20	St	34	1610	42	86,58	85,21	91	64	28	25	3	16F	0,57	
TL368M20	St	36	1610	42	91,67	90,30	98	68	28	25	3	16F	0,70	
TL388M20	St	38	1610	42	96,77	95,39	103	72	28	25	3	16F	0,82	
TL408M20	St	40	1610	42	101,86	100,49	106	76	28	25	3	16F	1,10	
TL448M20	St	44	2012	50	112,05	110,67	119	92	28	32	4	10F	1,20	
TL488M20	St	48	2012	50	122,23	120,86	127	96	28	32	4	10F	1,65	
TL568M20	St	56	2012	50	142,60	141,23	148	110	28	32	4	10F	2,50	
TL648M20	St	64	2012	50	162,97	161,60	168	110	137	28	32	4	11F	2,60
TL728M20	St	72	2012	50	183,35	181,97	192	110	158	28	32	4	11F	3,40
TL808M20	GG	80	2012	50	203,72	202,35	204	110	180	28	32	4	11	3,60
TL908M20	GG	90	2012	50	229,18	227,81	230	110	204	28	32	4	11	4,10

Material: Acero/Steel/Acier (St)

Material: Fundición/Cast iron/Fonte (GG)

**POLEAS DENTADAS HTD PARA TAPER**

HTD taper bored timing belt pulleys

Poulies dentées HTD pour moyeu amovible

**8M-30**

mm

Paso

8

Pitch

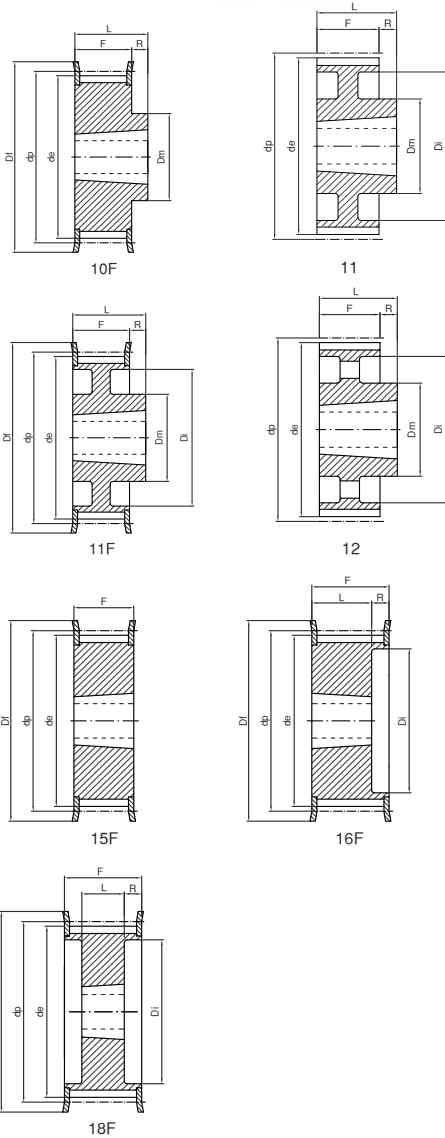
Pas

Para correas de ancho

30

For belt width

Pour courroies largeur



Material: Acero/Steel/Acier (St)

Material: Fundición/Cast iron/Fonete (GG)

Ref.	Material	Z	Taper Ø max.	dp	de	Df	Dm	Di	F	L	R	Fig.	Kg.	
TL228M30	St	22	1008	25	56,02	54,65	60	37	38	22	16	16F	0,33	
TL248M30	St	24	1108	25	61,11	59,74	66	44	38	22	16	16F	0,40	
TL268M30	St	26	1108	25	66,21	64,84	71	44	38	22	16	16F	0,45	
TL288M30	St	28	1210	32	71,30	70,08	75	50	38	25	13	16F	0,50	
TL308M30	St	30	1615	42	76,39	75,13	83		38	38		15F	0,55	
TL328M30	St	32	1615	42	81,49	80,16	87		38	38		15F	0,60	
TL348M30	St	34	1615	42	86,58	85,21	91		38	38		15F	0,80	
TL368M30	St	36	1615	42	91,67	90,30	98		38	38		15F	1,00	
TL388M30	St	38	1615	42	96,77	95,39	103		38	38		15F	1,10	
TL408M30	St	40	1615	42	101,86	100,49	106		38	38		15F	1,34	
TL448M30	St	44	2012	50	112,05	110,67	119	86	38	32	3	18F	1,30	
TL488M30	St	48	2012	50	122,23	120,86	127	90	38	32	3	18F	1,80	
TL568M30	St	56	2012	50	142,60	141,23	148	110	38	32	3	18F	3,80	
TL648M30	St	64	2517	60	162,97	161,60	168	125	38	45	7	10F	4,30	
TL728M30	St	72	2517	60	183,35	181,97	192	125	158	38	45	7	11F	4,40
TL808M30	GG	80	2517	60	203,72	202,35		125	180	38	45	7	11	4,65
TL908M30	GG	90	2517	60	229,18	227,81		125	204	38	45	7	11	5,80
TL1128M30	GG	112	2517	60	285,21	283,83		125	254	38	45	7	12	6,20
TL1448M30	GG	144	2517	60	366,69	365,32		125	336	38	45	7	12	9,00

**POLEAS DENTADAS HTD PARA TAPER**

HTD taper bored timing belt pulleys

Poulies dentées HTD pour moyeu amovible

**8M-50**

mm

Paso

8

Pitch

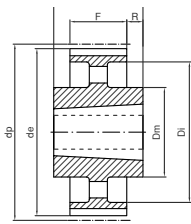
Pas

Para correas de ancho

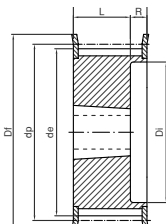
50

For belt width

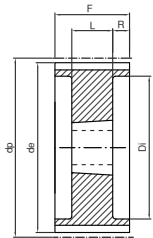
Pour courroies largeur



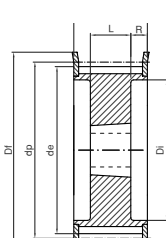
14



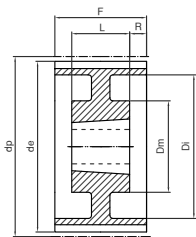
16F



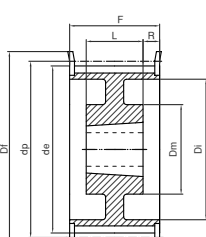
18



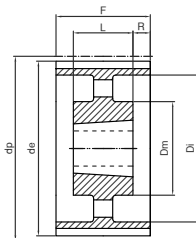
18F



19



19F



20

Material: Acero/Steel/Acier (St)

Material: Fundición/Cast iron/Fonete (GG)

Ref.	Material	Z	Taper Ø max.	dp	de	Df	Dm	Di	F	L	R	Fig.	Kg.	
TL288M50	St	28	1210	32	71,30	70,08	75	50	60	25	35	16F	0,60	
TL308M50	St	30	1615	42	76,39	75,13	83	58	60	38	22	16F	0,65	
TL328M50	St	32	1615	42	81,49	80,16	87	63	60	38	22	16F	0,80	
TL348M50	St	34	1615	42	86,58	85,21	91	65	60	38	22	16F	1,08	
TL368M50	St	36	1615	42	91,67	90,30	98	68	60	38	22	16F	1,35	
TL388M50	St	38	1615	42	96,77	95,39	103	72	60	38	22	16F	1,65	
TL408M50	St	40	2012	50	101,86	100,49	106	80	60	32	14	18F	1,70	
TL448M50	St	44	2012	50	112,05	110,67	119	86	60	32	14	18F	1,80	
TL488M50	St	48	2012	50	122,23	120,86	127	95	60	32	14	18F	2,35	
TL568M50	St	56	2517	60	142,60	141,23	148	116	60	45	7,5	18F	3,35	
TL648M50	St	64	2517	60	162,97	161,60	168	136	60	45	7,5	18F	4,90	
TL728M50	St	72	2517	60	183,35	181,97	192	125	158	60	45	7,5	19F	6,90
TL808M50	GG	80	3020	75	203,72	202,35		180	60	51	4,5	18	8,90	
TL908M50	GG	90	3020	75	229,18	227,81		160	204	60	51	4,5	19	9,90
TL1128M50	GG	112	3020	75	285,21	283,83		170	254	60	51	4,5	19	12,10
TL1448M50	GG	144	3020	75	366,69	365,32		170	336	60	51	4,5	20	15,40
TL1688M50	GG	168	3525	90	427,81	426,44		198	395	60	65	2,5	14	22,80
TL1928M50	GG	192	3525	90	488,92	487,55		198	455	60	65	2,5	14	26,50

**POLEAS DENTADAS HTD PARA TAPER**

HTD taper bored timing belt pulleys

Poulies dentées HTD pour moyeu amovible

**8M-85**

mm

Paso

8

Pitch

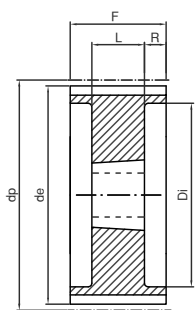
Pas

Para correas de ancho

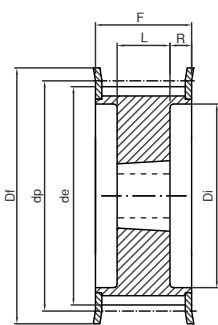
85

For belt width

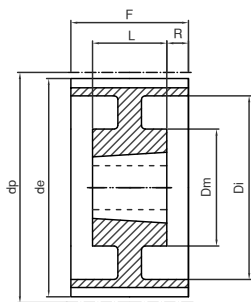
Pour courroies largeur



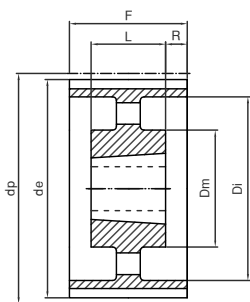
18



18F



19



20

Ref.	Material	Z	Taper	Ø max.	dp	de	Df	Dm	Di	F	L	R	Fig.	Kg.
TL348M85	St	34	1615	42	86,58	85,22	91	65	95	38	28,5	18F	1,50	
TL368M85	St	36	1615	42	91,67	90,30	98	68	95	38	28,5	18F	1,90	
TL388M85	St	38	1615	42	96,77	95,39	103	72	95	38	28,5	18F	2,20	
TL408M85	St	40	2012	50	101,86	100,49	106	80	95	32	31,5	18F	1,90	
TL448M85	St	44	2012	50	112,05	110,67	119	86	95	32	31,5	18F	2,30	
TL488M85	St	48	2517	60	122,23	120,86	127	97	95	45	25	18F	2,70	
TL568M85	St	56	2517	60	142,60	141,23	148	116	95	45	25	18F	4,50	
TL648M85	St	64	2517	60	162,97	161,60	168	136	95	45	25	18F	6,30	
TL728M85	St	72	3020	75	183,35	181,97	192	150	95	51	22	18F	8,10	
TL808M85	GG	80	3020	75	203,72	202,35		180	95	51	22	18	10,20	
TL908M85	GG	90	3020	75	229,18	227,81		170	204	95	51	22	19	11,20
TL1128M85	GG	112	3020	75	285,21	283,83		170	254	95	51	22	19	15,00
TL1448M85	GG	144	3525	90	366,69	365,32		198	336	95	65	15	20	20,20
TL1688M85	GG	168	3525	90	427,81	426,44		198	395	95	65	15	20	22,40
TL1928M85	GG	192	3525	90	488,92	487,55		198	455	95	65	15	20	28,20

Material: Acero/Steel/Acier (St)

Material: Fundición/Cast iron/Fonte (GG)

**POLEAS DENTADAS HTD PARA TAPER**

HTD taper bored timing belt pulleys

Poulies dentées HTD pour moyeu amovible

**14M-40**

mm

Paso

14

Pitch

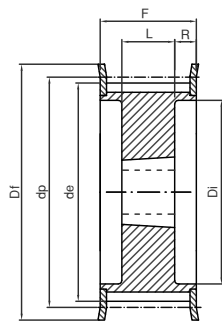
Pas

Para correas de ancho

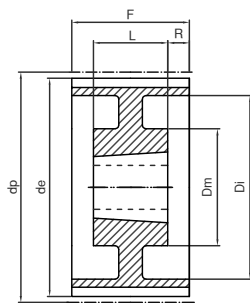
40

For belt width

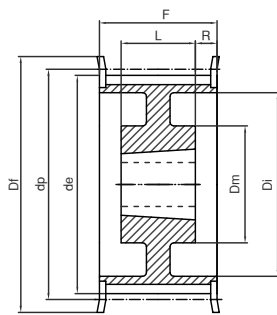
Pour courroies largeur



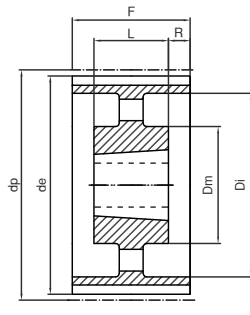
18F



19



19F



20

Ref.	Material	Z	Taper	Ø max.	dp	de	Df	Dm	Di	F	L	R	Fig.	Kg.
TL2814M40	St	28	2012	50	124,78	122,12	127		94	54	32	11	18F	2,10
TL3014M40	St	30	2012	50	133,69	130,99	138		98	54	32	11	18F	2,70
TL3214M40	St	32	2012	50	142,60	139,88	154		108	54	32	11	18F	3,40
TL3414M40	St	34	2517	60	151,52	148,79	160		110	54	45	4,5	18F	3,90
TL3614M40	St	36	2517	60	160,43	157,68	168		120	54	45	4,5	18F	4,80
TL3814M40	St	38	2517	60	169,34	166,60	183		130	54	45	4,5	18F	5,40
TL4014M40	St	40	2517	60	178,25	175,49	188		138	54	45	4,5	18F	6,00
TL4414M40	St	44	3020	75	196,08	193,28	211		155	54	51	1,5	18F	7,50
TL4814M40	St	48	3020	75	213,90	211,11	226		170	54	51	1,5	18F	8,50
TL5614M40	GG	56	3020	75	249,55	246,76	256		208	54	51	1,5	18F	10,10
TL6414M40	GG	64	3020	75	285,21	282,41	296	170	240	54	51	1,5	19F	13,40
TL7214M40	GG	72	3020	75	320,86	318,06		170	280	54	51	1,5	19	15,00
TL8014M40	GG	80	3020	75	356,51	353,71		170	315	54	51	1,5	20	16,00
TL9014M40	GG	90	3020	75	401,07	398,28		170	360	54	51	1,5	20	18,00
TL11214M40	GG	112	3020	75	499,11	496,32		170	457	54	51	1,5	20	25,50
TL14414M40	GG	144	3020	75	641,71	638,92		170	600	54	51	1,5	20	32,00
TL16814M40	GG	168	3020	75	748,66	745,87		170	706	54	51	1,5	20	43,50
TL19214M40	GG	192	3020	75	855,62	852,82		170	813	54	51	1,5	20	49,50

Material: Acero/Steel/Acier (St)

Material: Fundición/Cast iron/Fonte (GG)

**POLEAS DENTADAS HTD PARA TAPER**

HTD taper bored timing belt pulleys

Poulies dentées HTD pour moyeu amovible

**14M-55**

mm

Paso

14

Pitch

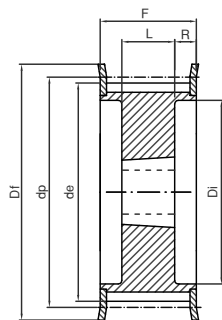
Pas

Para correas de ancho

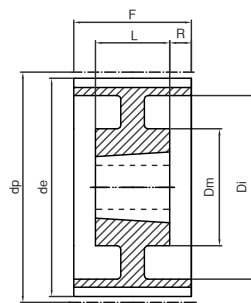
55

For belt width

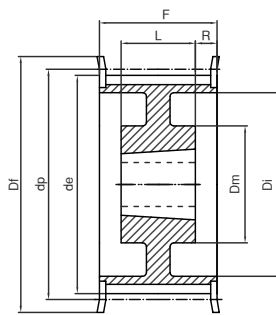
Pour courroies largeur



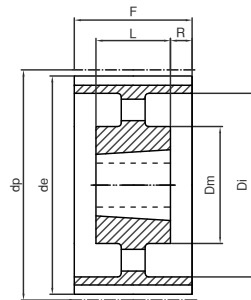
18F



19



19F



20

Material: Acero/Steel/Acier (St)

Material: Fundición/Cast iron/Fonte (GG)

Ref.	Material	Z	Taper Ø max.	dp	de	Df	Dm	Di	F	L	R	Fig.	Kg.	
TL2814M55	St	28	2012	50	124,78	122,12	127	94	70	32	19	18F	2,20	
TL3014M55	St	30	2517	60	133,69	130,99	138	100	70	45	12,5	18F	2,70	
TL3214M55	St	32	2517	60	142,60	139,88	154	108	70	45	12,5	18F	3,60	
TL3414M55	St	34	2517	60	151,52	148,79	160	110	70	45	12,5	18F	4,50	
TL3614M55	St	36	2517	60	160,43	157,68	168	120	70	45	12,5	18F	5,20	
TL3814M55	St	38	2517	60	169,34	166,60	183	130	70	45	12,5	18F	6,20	
TL4014M55	St	40	2517	60	178,25	175,49	188	138	70	45	12,5	18F	6,90	
TL4414M55	St	44	3020	75	196,08	193,28	211	155	70	51	9,5	18F	8,60	
TL4814M55	St	48	3020	75	213,90	211,11	226	170	70	51	9,5	18F	10,50	
TL5614M55	GG	56	3020	75	249,55	246,76	256	208	70	51	9,5	18F	13,50	
TL6414M55	GG	64	3020	75	285,21	282,41	296	170	240	70	51	9,5	19F	14,50
TL7214M55	GG	72	3020	75	320,86	318,06		170	280	70	51	9,5	19	16,30
TL8014M55	GG	80	3020	75	356,51	353,71		170	315	70	51	9,5	20	17,50
TL9014M55	GG	90	3020	75	401,07	398,28		170	360	70	51	9,5	20	20,00
TL11214M55	GG	112	3020	75	499,11	496,32		170	457	70	51	9,5	20	28,20
TL14414M55	GG	144	3020	75	641,71	638,92		170	600	70	51	9,5	20	36,00
TL16814M55	GG	168	3020	75	748,66	745,87		170	706	70	51	9,5	20	48,50
TL19214M55	GG	192	3020	75	855,62	852,82		170	813	70	51	9,5	20	52,00

**POLEAS DENTADAS HTD PARA TAPER**

HTD taper bored timing belt pulleys

Poulies dentées HTD pour moyeu amovible

**14M-85**

mm

Paso

14

Pitch

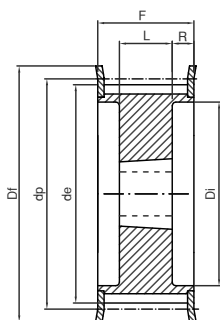
Pas

Para correas de ancho

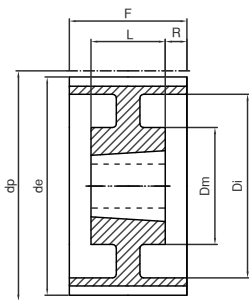
85

For belt width

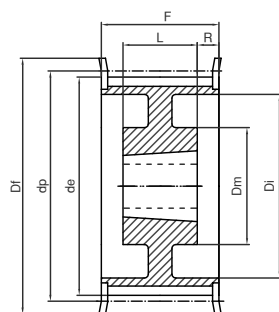
Pour courroies largeur



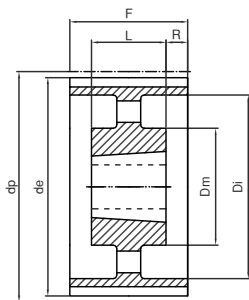
18F



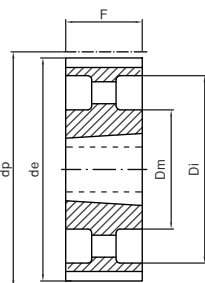
19



19F



20



22

Material: Acero/Steel/Acier (St)

Material: Fundición/Cast iron/Fonte (GG)

Ref.	Material	Z	Taper Ø max.	dp	de	Df	Dm	Di	F	L	R	Fig.	Kg.	
TL2814M85	St	28	2517	60	124,78	122,12	127	98	102	45	28,5	18F	2,70	
TL3014M85	St	30	2517	60	133,69	130,99	138	100	102	45	28,5	18F	3,80	
TL3214M85	St	32	2517	60	142,60	139,88	154	108	102	45	28,5	18F	4,70	
TL3414M85	St	34	2517	60	151,52	148,79	160	110	102	45	28,5	18F	6,00	
TL3614M85	St	36	3020	75	160,43	157,68	168	125	102	51	25,5	18F	5,70	
TL3814M85	St	38	3020	75	169,34	166,60	183	130	102	51	25,5	18F	6,80	
TL4014M85	St	40	3020	75	178,25	175,49	188	138	102	51	25,5	18F	8,00	
TL4414M85	St	44	3030	75	196,08	193,28	211	155	102	76	13	18F	11,70	
TL4814M85	St	48	3030	75	213,90	211,11	226	170	102	76	13	18F	15,00	
TL5614M85	GG	56	3525	90	249,55	246,76	256	210	102	65	18,5	18F	19,00	
TL6414M85	GG	64	3525	90	285,21	282,41	296	190	240	102	65	18,5	19F	23,50
TL7214M85	GG	72	3525	90	320,86	318,06		190	280	102	65	18,5	19	25,00
TL8014M85	GG	80	3525	90	356,51	353,71		190	315	102	65	18,5	20	26,00
TL9014M85	GG	90	3525	90	401,07	398,28		190	360	102	65	18,5	20	28,00
TL11214M85	GG	112	3525	90	499,11	496,32		190	457	102	65	18,5	20	36,00
TL14414M85	GG	144	3525	90	641,71	638,92		190	600	102	65	18,5	20	48,00
TL16814M85	GG	168	3525	90	748,66	745,87		190	706	102	65	18,5	20	60,00
TL19214M85	GG	192	4040	100	855,62	852,82		230	813	102	102	22	85,00	





**POLEAS DENTADAS HTD PARA TAPER**

HTD taper bored timing belt pulleys

Poulies dentées HTD pour moyeu amovible

**14M-170**

mm

Paso

14

Pitch

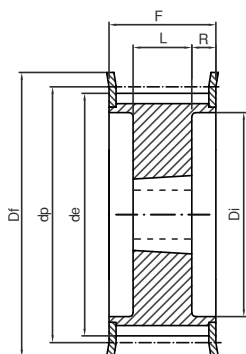
Pas

Para correas de ancho

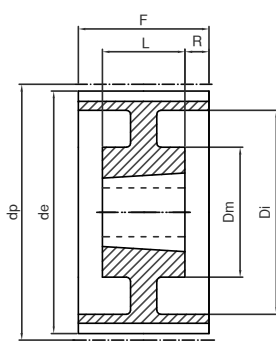
170

For belt width

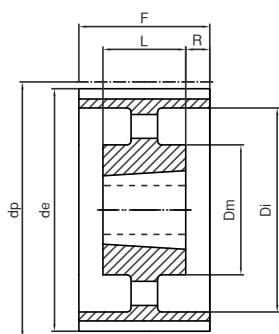
Pour courroies largeur



18F



19



20

Ref.	Material	Z	Taper	Ø max.	dp	de	Df	Dm	Di	F	L	R	Fig.	Kg.
TL3814M170	St	38	3030	75	169,34	166,60	183	130	187	76	55,5	18F	11,70	
TL4014M170	St	40	3030	75	178,25	175,49	188	138	187	76	55,5	18F	13,00	
TL4414M170	St	44	3535	90	196,08	193,28	211	155	187	89	49	18F	15,00	
TL4814M170	St	48	3535	90	213,90	211,11	226	170	187	89	49	18F	19,00	
TL5614M170	St	56	3535	90	249,55	246,76	256	210	187	89	49	18F	28,50	
TL6414M170	GG	64	4040	100	285,21	282,41	296	240	187	102	42,5	18F	41,00	
TL7214M170	GG	72	4040	100	320,86	318,06		230 280	187	102	42,5	19	47,00	
TL8014M170	GG	80	4040	100	356,51	353,71		230 315	187	102	42,5	19	48,00	
TL9014M170	GG	90	4040	100	401,07	398,28		230 360	187	102	42,5	20	52,50	
TL11214M170	GG	112	5050	125	499,11	496,32		265 457	187	127	30	20	74,50	
TL14414M170	GG	144	5050	125	641,71	638,92		265 600	187	127	30	20	91,00	
TL16814M170	GG	168	5050	125	748,66	745,87		265 706	187	127	30	20	116,00	
TL19214M170	GG	192	5050	125	855,62	852,82		265 813	187	127	30	20	134,00	

Material: Acero/Steel/Acier (St)

Material: Fundición/Cast iron/Fonte (GG)